

THE ROSEMARY MURRAY FUND 2013

Annual giving for on-going impact

Reporting back
and looking ahead



From The President

What a joy to be back at Murray Edwards, New Hall.

There is so much of the College that I remember from my time here especially its openness and friendliness. I was so pleased to see a sign on the grass as I recently walked through the College garden: "Pick the daisies and make a daisy chain". That is Murray Edwards. Of course the most important thing for all of us, past and present, is its focus on women's education and development. This focus and the effort that is put into it by Fellows and Staff is very special. That is why so many of alumnae like me feel so grateful to the College for what it gave us. It is so good to see so many alumnae making a real difference in the world, across many walks of life and across the globe.

To all of you, alumnae and friends who give to Murray Edwards, I want to say a sincere thank you. It is not a rich College, though the generous donation by Ros Smith (NH 1981) and Steve Edwards has made it much more sustainable. As the College goes into its 60th year since its foundation in 1954, I hope we can continue to grow and develop with funding needed for students, especially graduates, for Fellowships and for our buildings. I hope these few pages give you a real sense of what your generous donations have achieved and that it inspires you to keep giving and to encourage others to support the College in whatever way they can.

Thank you all for your commitment to the College.

Barbara

Dame Barbara Stocking (NH 1969)

Looking ahead

We continue to raise funds for the Rosemary Murray Fund. This year your Annual Fund Gift will help us:

Support Study

- equipping individuals to meet the costs of extra research projects and field study
- enabling young academics to develop their careers
- inspiring students to think, to learn, to argue and to be intellectually bold

Enrich the experience

- delivering excellent quality of life and providing support pastorally as well as academically
- empowering students by equipping them for life after graduation
- securing access to a wide range of cultural, sporting and leisure activities

Meet areas of greatest need

- ensuring flexibility to meet unexpected needs and challenges head on
- providing support for individual cases of hardship
- enabling us to celebrate and reward outstanding performance

The benefits of regular giving

Every gift to the Annual Fund makes a difference, added together with gifts from other supporters they enable us to help today's students in a way that would otherwise be beyond our reach. Regular gifts in particular have a huge impact allowing the College to plan ahead:

- A regular monthly gift of **£27**, with Gift Aid, **would fund a Rosemary Murray Scholarship**, rewarding excellence and encouraging academic endeavour
- A regular monthly gift of **£100**, with Gift Aid, would cover the **living costs for a student on an internship** over the summer vacation
- A single gift of **£150**, with Gift Aid, would **fund a language course** for those that wished to supplement their studies with an additional skill

Strength in numbers

If all of our alumnae participated, even with a small regular amount or a one-off gift, the impact for the College and its students would be substantial and enduring.

With everyone giving

£5.00

a month for 3 years with Gift Aid, the College would receive just over £1,000,000

£200

annually for 3 years with Gift Aid, the College would receive £3,375,000

Together, even modest gifts can be transformative.

Academic opportunity and philanthropic support go hand in hand. Support for students, whatever their background, has always been a priority at the College and ensures that as many young women as possible can make the most of a Cambridge education and can go on to influence the lives of others.

At a time of financial crisis with cuts in funding to higher education, pursuing a degree can be a real stretch for many. We remain committed to ensuring that our talented students are able to achieve their full potential whatever their circumstances.

In the last year, the College received over £183,000 in new gifts and pledges. Much of this was raised during the annual telephone campaign. Many of you will have enjoyed conversations with one of our team of student callers. In addition to asking for your support, they relished sharing stories of the student experience across the generations and hearing your news.

Your gifts to the Rosemary Murray Fund for Student Support make it possible for the College to continue to support, to challenge and to influence our young women. Some of our highlights this year include:

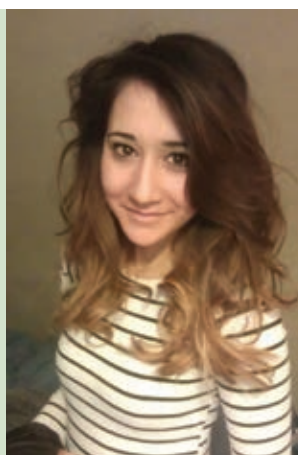
- We were able to respond quickly to cases of unexpected financial hardship
- We contributed towards the Cambridge Bursary Scheme which 24% of our students rely on
- We awarded 41 student travel exhibitions for travel within the UK, Europe and further afield
- We supported 30 students who took up volunteering and internship placements in association with the Gateway Programme
- We subsidised vacation accommodation for those doing elective projects in Cambridge
- We were able to offer financial assistance to a number of graduate students
- We were able to provide funding for women competing at University level in sports including basketball, hockey, netball, rowing, rugby, ski-racing and water polo

12%

of alumnae made
a donation in
2012/2013



The Academic Needs Fund enabled me to take a German language course and singing supervisions. Both are crucial elements in helping me, not only for my degree, but in my future profession. I have progressed significantly in German and am using the language for both choral and solo singing.
Sophie Horrocks (2nd Year, Music)



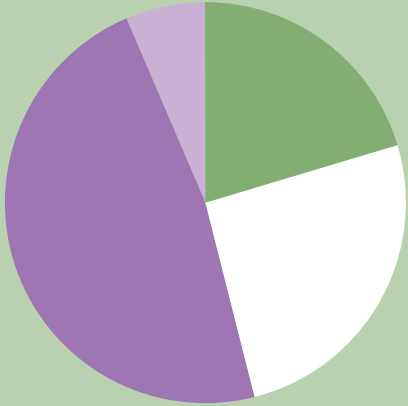
Over the summer of 2012, I travelled to Unst, Shetland. We were there to document the geology of the area, with the aim of producing a map for our dissertation. In addition to the travel and accommodation, we had to pay for extra field equipment. The Rosemary Murray Fund was very helpful in making sure I could afford all of these in order to complete my project.
Elizabeth Read (3rd Year, Natural Science)



Financial Highlights

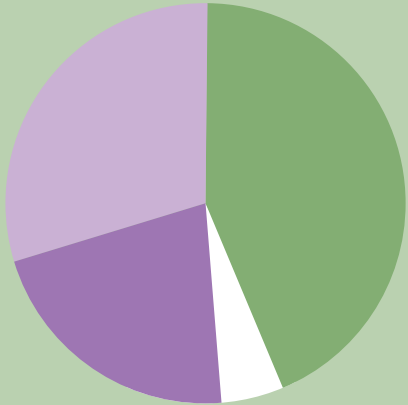
Gift Income

This financial year we have received gifts totalling £550,000. This income is a combination of new donations to College, fulfilment of previous pledges and legacies.



Total Gift Income

- New Gifts
- Fulfilled Gifts
- Legacy Gifts
- Gift Aid



Distribution of Philanthropic Income

- Student Support
- Enriching the Experience
- Greatest Need
- Fellowship

Legacy Giving

The College received several legacy gifts this year, with the majority allocated to College Fellowships, £193,000 was allocated to a Fellowship in Maths and a further £63,500 towards the Roma Gill Fellowship in English.



I will be travelling to Kathmandu for three weeks. Many young people in Nepal are unemployed and I am researching how they engage with political issues through protest, student networks of resistance and party politics.
 Siena Carver
 (2nd Year, Geography)

Generations of giving

“My three years at New Hall were incredibly formative both in terms of the friendships I made and the career I have gone onto pursue as an author. It is great to be able to support the college in continuing to provide the uniquely supportive and academically nurturing environment that I myself benefitted from whilst at Cambridge.”

Joanna Rossiter (NH 2004)

“Being at Cambridge shaped my life for the better in so many ways; now that I am in a position to make donations, it is the least that I can do. Furthermore, I was fortunate enough to be a student at a time when tertiary education did not entail fees; even more reason to help others benefit now.”

Dr Madhvi Chanrai (NH 1981)

“I went up to Cambridge in 1955, which meant that I was in the second group of 15 undergraduates at New Hall. We all felt very special and I took pleasure in getting to know Dame Rosemary well. I have always kept in close contact with the college and I am very pleased to be able to contribute a little financial help towards the undergraduates of today. I hope many other graduates feel as I do.”

Valerie Hess (NH 1955)



Murray Edwards
College
founded as New Hall

Development Office, Murray Edwards College, New Hall,
Cambridge CB3 0DF
01223 762288 - development@murrayedwards.cam.ac.uk
www.murrayedwards.cam.ac.uk/giving/makeagift